

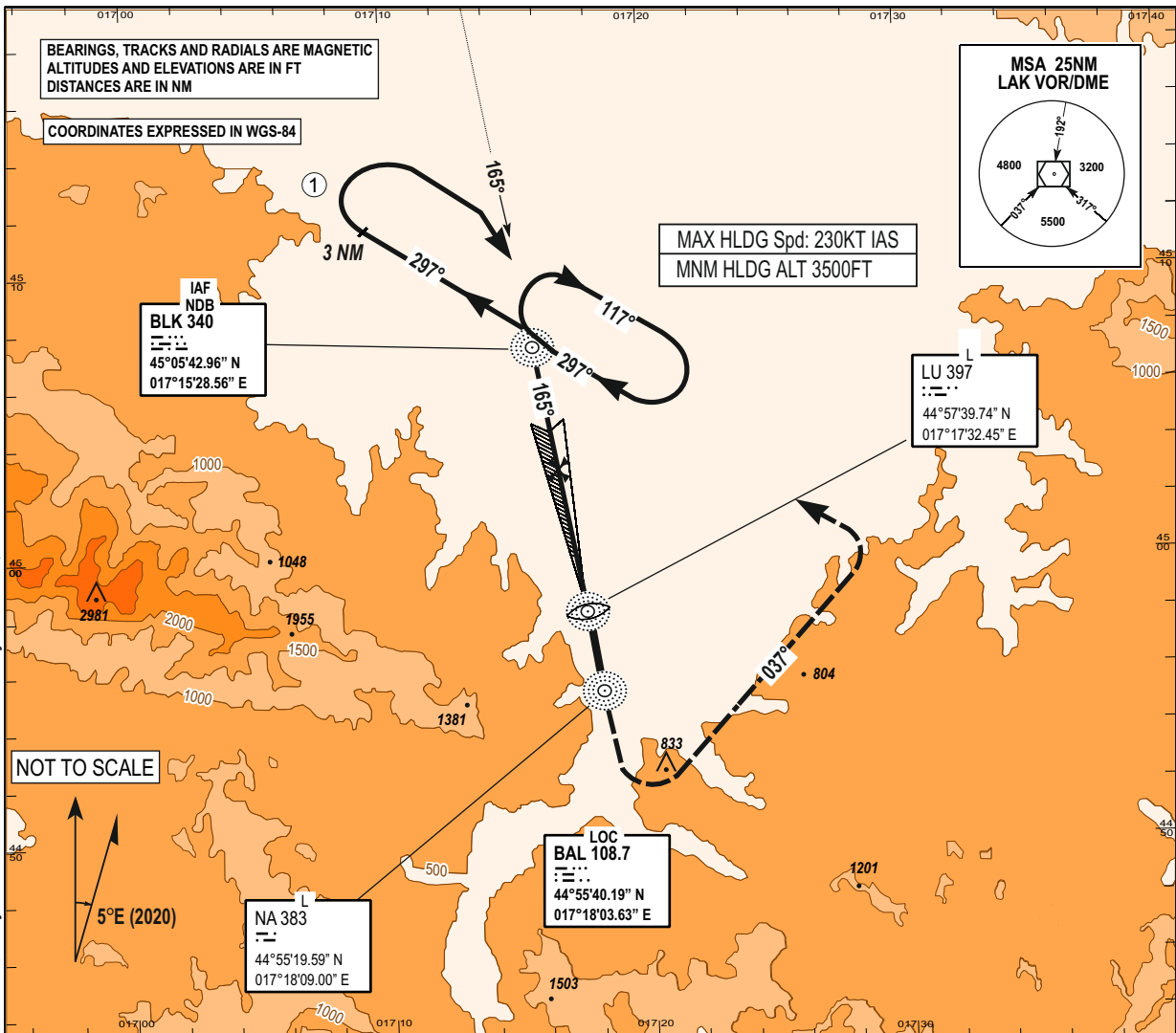
**INSTRUMENT  
APPROACH  
CHART - ICAO**

AD ELEV 401 FT  
HEIGHTS RELATED TO  
THR RWY16 ELEV 376 FT

TRANSITION  
ALTITUDE  
10 000FT  
VAR 5°E (2020)

TWR/APP 133.075  
SPARE 124.175

**BANJA LUKA (LQBK)  
ILSy RWY 16**

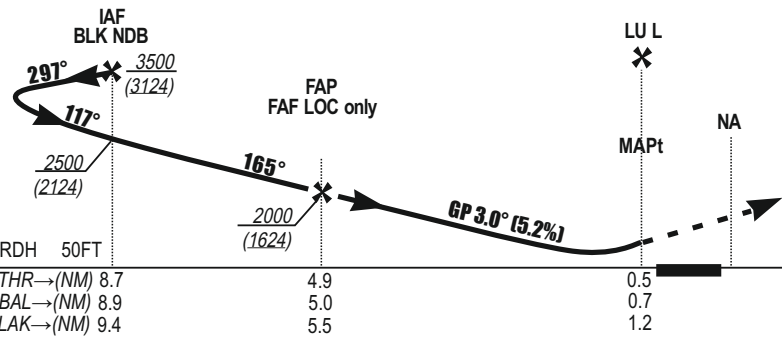


DME DIST/ALTITUDE(HEIGHT) TABLE

DME BAL	9.0	8.0	7.0	6.0	5.0	4.0	3.0	2.0	1.0
DME LAK	9.5	8.5	7.5	6.5	5.5	4.5	3.5	2.5	1.5
ALT (HGHT) 5.2% APCH	3240 (2864)	2920 (2544)	2600 (2224)	2290 (1914)	1970 (1594)	1650 (1274)	1330 (954)	1010 (634)	690 (314)

FAP/FAF TO LU DISTANCE

KT	80	120	150	180	210
MIN : SEC	3:18	2:12	1:46	1:28	1:15
Rate of descent 3° FT/MIN	420	640	800	950	1110



**MISSED APPROACH:**  
Climb on RWY TR to 1500 FT.  
Then turn **LEFT** on to track **037°** climbing to **4500 FT**.  
Then turn **LEFT** join the holding.

OCA / H published in feet.

CAT	ILS CAT I	LOC only	CIRCLING
A	620 / 244	720 / 344	870 / 494
B	620 / 244	720 / 344	1000 / 624
C	620 / 244	720 / 344	1210 / 834
D	620 / 244	720 / 344	1260 / 884

- WARNINGS:
- ① Procedure turn MAX 180KT.
  - Initial approach TR close to Bosnia and Herzegovina/Croatian border. Pilots should ensure they remain within Bosnia and Herzegovina airspace at all times.

CHG: MAG VAR, MAG BEARINGS & RADIALS, RWY DESIGNATORS, MSA BEARINGS, ILSy RWY 17 RENAMED TO ILSy RWY 16;

THIS PAGE INTENTIONALLY LEFT BLANK